



Specifications for Paramount™ Model 332

© Copyright 2011, Joseph Hardy, Alan Baker, and Iain McGlinchey dba "Paramount Organ Works"™. All rights reserved.
All specifications are subject to change.

RANKS

16 English Horn 73 (S)	8 Saxophone 61 (S)	8 Vox Humana M 61 (M)
8 Trumpet 61 (S)	16 Strings (8 Ranks) 85 (M)	Grand Piano 85
16 Tuba Horn 85 (M)	16 Gamba 85 (M)	Upright Piano 85
32 Diaphonic Diapason 97 (M)	8 Gamba Celeste 73 (M)	Harp 49 (S)
16 Open Diapason 85 (M)	32 Viol d'Orchestre 109 (S)	Xylophone 49 (S)
8 Horn Diapason 73 (S)	8 Viol Celeste 73 (S)	Glockenspiel 37 (S)
8 Horn Diapason Celeste 61 (S)	8 Krumet 61 (M)	Chrysoglott 49 (M)
32 Tibia Clausa S 120 (S)	16 Oboe Horn 73 (S)	Vibraharp 49 (S)
8 Tibia Clausa M 85 (M)	8 Quintadena 61 (M)	Sleigh Bells 37 (S)
16 Clarinet 73 (M)	16 Concert Flute 109 (M)	Cathedral Chimes 25 (P)
8 Kinura 61 (S)	8 Concert Flute Celeste 73 (M)	Kettle Drum (tuned)
8 Orchestral Oboe 61 (S)	8 Vox Humana S 61 (S)	Traps & Effects (P)

STOP LIST

SOLO

16 English Horn	8 Strings (8 Rks)	8 Piano
16 Trumpet (Ten C)	8 Gamba (2 Rks)	4 Piano
16 Ophicleide	8 Viol d'Orchestre (2 Rks)	Harp Sub
16 Diaphone	8 Krumet	Harp
16 Tibia Clausa S	8 Oboe Horn	Cathedral Chimes
16 Tibia Clausa M (Ten C)	8 Quintadena	Xylophone
16 Clarinet	8 Concert Flute	Glockenspiel
16 Saxophone (Ten C)	8 Vox Humana S	Chrysoglott Sub
16 Krumet (Ten C)	8 Vox Humana M	Chrysoglott
16 Vox Humana S (Ten C)	4 Octave	Vibraphone
16 Vox Humana M (Ten C)	4 Piccolo S	Sleigh Bells
8 English Horn	4 Piccolo M	String Celestes Off
8 Trumpet	4 Strings (8 Rks)	Flute Celeste On
8 Tuba Horn	4 Gambette (2 Rks)	MIDI on Solo
8 Diaphonic Diapason	4 Viol (2 Rks)	Sub Octave
8 Open Diapason	2 ^{2/3} Twelfth (Tibia S)	Unison Off
8 Horn Diapason (2 Rks)	2 ^{2/3} Twelfth (Tibia M)	Octave
8 Tibia Clausa S	2 Piccolo (Tibia S)	Great to Solo Sub
8 Tibia Clausa M	2 Piccolo (Tibia M)	Great to Solo
8 Clarinet	1 ^{3/5} Tierce (Tibia S)	Great to Solo Octave
8 Kinura	1 ^{3/5} Tierce (Tibia M)	Great to Solo Quint
8 Orchestral Oboe	1 ^{1/3} Larigot (Tibia M)	Great to Solo Tierce
8 Saxophone	1 Fife (Tibia M)	

GREAT

16 English Horn	8 Clarinet	2 Piccolo (Tibia S)
16 Trumpet (Ten C)	8 Kinura	2 Piccolo (Tibia M)
16 Ophicleide	8 Orchestral Oboe	2 Fifteenth
16 Diaphone	8 Saxophone	2 Piccolo
16 Bass	8 Strings (8 Rks)	1 ^{3/5} Tierce (Tibia S)
16 Horn Diapason (2 Rks)	8 Gamba (2 Rks)	1 Fife (Tibia M)
16 Tibia Clausa S	8 Viol d'Orchestre (2 Rks)	1 Fife
16 Tibia Clausa M	8 Krumet	16 Piano
16 Clarinet	8 Oboe Horn	8 Piano
16 Orchestral Oboe (Ten C)	8 Quintadena	4 Piano
16 Saxophone (Ten C)	8 Concert Flute	Harp Sub
16 Strings (8 Rks)	8 Vox Humana S	Harp
16 Gamba (2 Rks)	8 Vox Humana M	Xylophone Sub
16 Contra Violone (2 Rks)	5 ^{1/3} Fifth (Tibia S)	Xylophone
16 Krumet (Ten C)	5 ^{1/3} Fifth (Tibia M)	Glockenspiel
16 Oboe Horn (Ten C)	4 Octave	Chrysoglott
16 Quintadena (Ten C)	4 Octave Open	Vibraphone
16 Bourdon	4 Octave Horn (2 Rks)	String Celestes Off
16 Vox Humana S (Ten C)	4 Piccolo S	Flute Celeste On
16 Vox Humana M (Ten C)	4 Piccolo M	MIDI on Great
8 English Horn	4 Strings (8 Rks)	Sub Octave
8 Trumpet	4 Gambette (2 Rks)	Unison Off
8 Tuba Horn	4 Viol (2 Rks)	Octave
8 Diaphonic Diapason	4 Flute	Solo to Great Sub
8 Open Diapason	3 ^{1/5} Tenth (Tibia M)	Solo to Great
8 Horn Diapason (2 Rks)	2 ^{2/3} Twelfth (Tibia S)	Solo Sub Great PIZZ
8 Tibia Clausa S	2 ^{2/3} Twelfth (Tibia M)	Solo to Great PIZZ
8 Tibia Clausa M	2 ^{2/3} Twelfth	

ACCOMP

8 English Horn	8 Vox Humana M	Side Stick
8 Trumpet	4 Octave Open	Snare Drum
8 Tuba Horn	4 Octave Horn (2 Rks)	Tambourine Roll
8 Diaphonic Diapason	4 Piccolo M	Tambourine
8 Open Diapason	4 Strings (8 Rks)	Castanets
8 Horn Diapason (2 Rks)	4 Gambette (2 Rks)	Tom Tom
8 Tibia Clausa S	4 Viol (2 Rks)	Chinese Block
8 Tibia Clausa M	4 Piccolo	Hi Hat Open
8 Clarinet	4 Vox Humana S	Hi Hat Closed
8 Orchestral Oboe	4 Vox Humana M	Tap Cymbal
8 Saxophone	2 ^{2/3} Twelfth (Tibia)	Ride Cymba
8 Strings (8 Rks)	2 ^{2/3} Twelfth	String Celestes Off
8 Gamba (2 Rks)	2 Piccolo (Tibia)	Flute Celeste Onl
8 Viol d'Orchestre (2 Rks)	8 Piano	MIDI on Accomp
8 Krumet	4 Piano	Octave to Accomp
8 Oboe Horn	Harp Sub	Solo to Accomp
8 Quintadena	Harp	Tuned Perc to 2 nd Touch
8 Concert Flute	Chrysoglott	Traps To 2 nd Touch
8 Vox Humana S	Vibraphone	

ACCOMP 2nd TOUCH

8 English Horn
8 Trumpet
8 Tuba Horn
8 Diaphonic Diapason
8 Open Diapason
8 Tibia Clausa S

8 Tibia Clausa M
8 Clarinet
4 Piccolo (Tibia S)
4 Piccolo (Tibia M)
8 Piano
Xylophone

Glockenspiel
Triangle
Great Octave to Accomp
Solo to Accomp

PEDAL

32 Contra Diaphone
32 Contra Tibia Clausa
32 Contra Violone
16 English Horn
16 Ophicleide
16 Diaphone
16 Bass
16 Horn Diapason
16 Tibia Clausa
16 Clarinet
16 Gamba
16 Violone
16 Bourdon
8 English Horn

8 Trumpet
8 Tuba Horn
8 Diaphonic Diapason
8 Open Diapason
8 Horn Diapason (2 Rks)
8 Tibia Clausa S
8 Tibia Clausa M
8 Clarinet
8 Strings (8 Rks)
8 Gamba (2 Rks)
8 Viol d'Orchestre (2 Rks)
8 Oboe Horn
8 Flute
16 Piano
8 Piano

Bass Drum
Kettle Drum
Snare Drum
Crash Cymbal
Cymbal Roll
Hi Hat Open
Tap Cymbal
Ride Cymbal
Triangle
String Celestes Off
Flute Celeste On
MIDI on Pedal
Accomp to Pedal
Great Octave to Pedal
Solo to Pedal

EFFECTS

Grand Crash
Drum Roll
Cymbal Roll I
Cymbal Roll II
Crash Cymbal
Choke Cymbal

Scrape Cymbal
Chinese Gong
Bell Tree
Triangle
Train Whistle
Fire Bell

Door Bell
Ahooga Horn
Siren
Stop Action Noise
TremBox Noise
Blower Noise

TREMULANTS

Main
Solo
Clarinet
Tuba/Diapason

Tibia Clausa
Vox
Strings Main
Strings Solo

Saxophone
Trumpet
Vibraphone

RE-ITERATION

Harp

Xylophone

Glockenspiel

SWITCHES

Alternate Piano (grand/upright)
Horn Diapason Celestes On

Blower
Expression on Master
Pizzicato Speed (slider)

Great Sostenuto (physical)
Piano Sustain (physical)
Mem up / down

PEDALS

Swell (Main, Solo, Percussion)

Crescendo

PISTONS

Solo 20 (11-15, pp-ff, 1-10)
Great 20 (6-10, pp-ff, 1-10)
Accomp 20 (1-5, pp-ff, 1-10)

Pedal 5 (1-5)
SET
C

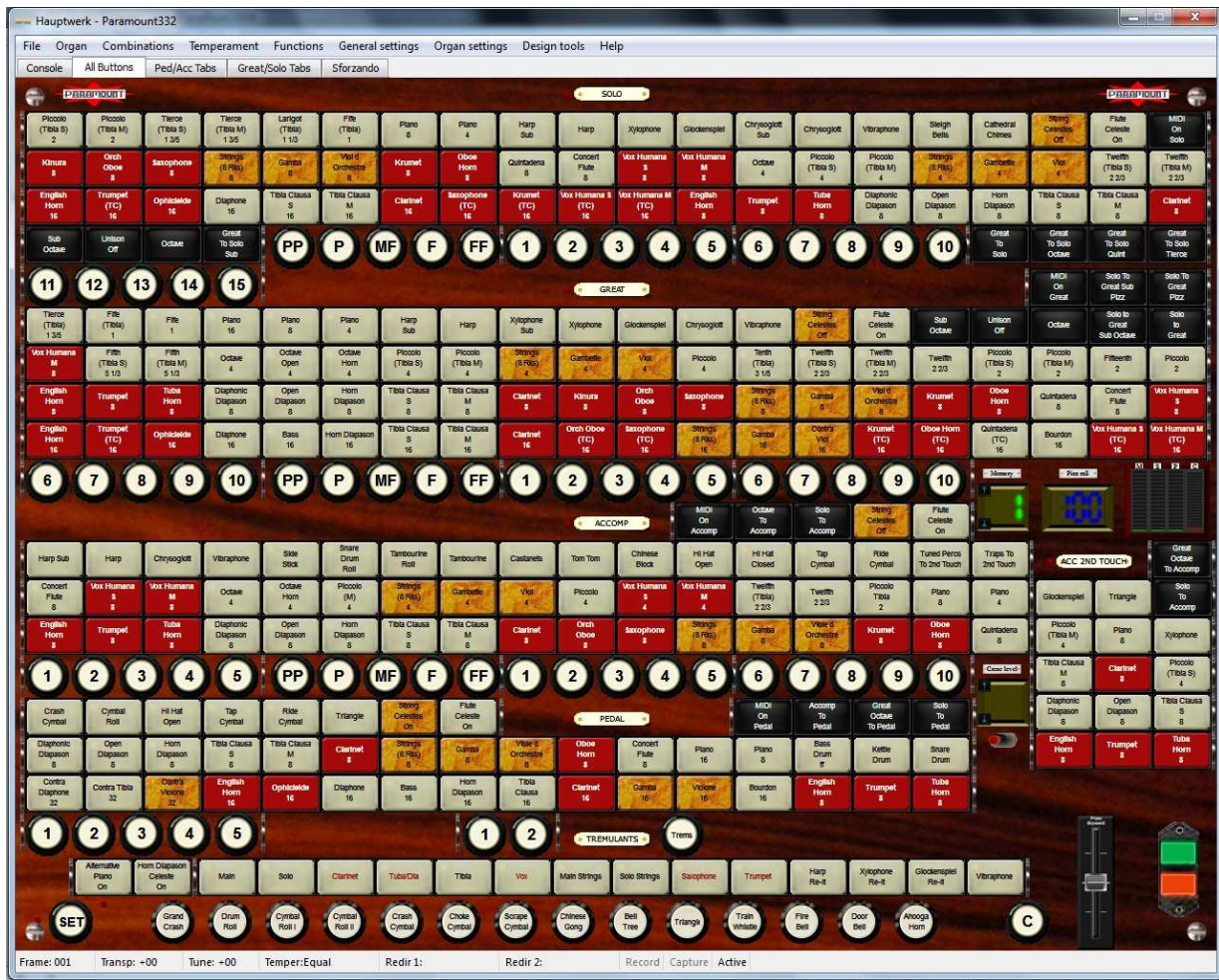
TREM (reversible)
TREM (1-2)

DISPLAYS

Memory Level (1 - 5)

Swell Pos (Main/Solo/Perc)

Crescendo Position



Hauptwerk - Paramount332

File Organ Combinations Temperament Functions General settings Organ settings Design tools Help

Console All Buttons Ped/Acc Tabs Great/Solo Tabs Sforzando

GRAND

PIANO PIANO HARP SUB HARP CHIME XYLO GLOCK SUB CHRYS VIB TANG STAPS SUB STRINGS (2 Pcs) FLUTE CELCEL MIDI On Solo Sub Octave Union Off Octave Great To Solo Great To Solo Great To Solo Great To Solo

8 PIANO 4 PIANO 8 SUB 8 HARP 8 CHIME 8 XYLO 8 GLOCK 8 SUB 8 CHRYS 8 VIB 8 TANG 8 STAPS 8 SUB 8 STR 8 CEL 8 CEL 8 MIDI 8 ON 8 SOLO 8 SUB 8 OCT 8 OFF 8 OCT 8 GREAT 8 GREAT 8 GREAT 8 GREAT 8 GREAT 8 GREAT 8 GREAT

Strings (2 Pcs) Gammas Viol of Orchestra Krumphorn Oboe Horn Quintet Concert Flute Viol Hummer 2 Viol Hummer 3 Octave Piccolo (Tuba S) Piccolo (Tuba M) Strings (2 Pcs) Contrabass Viol Twelfth (Tuba S) Twelfth (Tuba M) Piccolo (Tuba S) Piccolo (Tuba M) Treble (Tuba S) Treble (Tuba M) Large (Tuba) Fife (Tuba)

8 STR 8 GAM 8 VIOL 8 KRUM 8 OBOE 8 QUINT 8 FLUTE 8 VOX 8 VOX 8 OCT 4 PICC 4 PICC 8 STR 8 GAM 8 VIOL 8 VIOL 8 TWEL 8 TWEL 8 TWEL 8 TWEL 8 PICC 8 PICC 8 TREB 8 TREB 8 TREB 8 TREB 8 LAR 8 FIF 8 FIF

English Horn Trumpet Ophicleide Diaphone Tuba Bass Horn Clarinet Saxophone Piccolo (Tuba S) Piccolo (Tuba M) Strings (2 Pcs) Contrabass Viol Twelfth (Tuba S) Twelfth (Tuba M) Piccolo (Tuba S) Piccolo (Tuba M) Treble (Tuba S) Treble (Tuba M) Large (Tuba) Fife (Tuba)

16 HORN 16 TRUM 16 OPH 16 DIAPH 16 TUBA 16 BASS 16 HORN 16 CLAR 16 SAX 16 PICC 16 PICC 16 STR 16 GAM 16 VIOL 16 VIOL 16 TWEL 16 TWEL 16 TWEL 16 TWEL 16 PICC 16 PICC 16 TREB 16 TREB 16 TREB 16 TREB 16 LAR 16 FIF 16 FIF

11 12 13 14 15 PP P MF F FF 1 2 3 4 5 6 7 8 9 10

GRAND

PIANO PIANO HARP SUB HARP CHIME XYLO GLOCK CHRYS VIB CFX CELCEL MIDI On Great Sub Octave Union Off Octave Solo To Great Solo To Great Solo To Great Solo To Great

16 PIANO 8 PIANO 4 HARP 8 SUB 8 HARP 8 CHIME 8 XYLO 8 GLOCK 8 CHRYS 8 VIB 8 CFX 8 CEL 8 CEL 8 MIDI 8 ON 8 GREAT 8 SUB 8 OCT 8 OFF 8 OCT 8 SOLO 8 SOLO 8 SOLO 8 SOLO

Flute (Tuba S) Flute (Tuba M) Octave Horn Octave Horn Piccolo (Tuba S) Piccolo (Tuba M) Strings (2 Pcs) Contrabass Viol Twelfth (Tuba S) Twelfth (Tuba M) Piccolo (Tuba S) Piccolo (Tuba M) Treble (Tuba S) Treble (Tuba M) Large (Tuba) Fife (Tuba)

8 FLU 8 FLU 8 OCT 4 HORN 4 HORN 8 PICC 8 PICC 8 STR 8 GAM 8 VIOL 8 VIOL 8 TWEL 8 TWEL 8 TWEL 8 TWEL 8 PICC 8 PICC 8 TREB 8 TREB 8 TREB 8 TREB 8 LAR 8 FIF 8 FIF

English Horn Trumpet Tuba Horn Diaphone Bass Horn Clarinet Saxophone Piccolo (Tuba S) Piccolo (Tuba M) Strings (2 Pcs) Contrabass Viol Twelfth (Tuba S) Twelfth (Tuba M) Piccolo (Tuba S) Piccolo (Tuba M) Treble (Tuba S) Treble (Tuba M) Large (Tuba) Fife (Tuba)

8 HORN 8 TRUM 8 TUBA 8 DIA 8 OPEN 8 OPEN 8 HORN 8 CLAR 8 SAX 8 OBOE 8 SAX 8 STR 8 GAM 8 VIOL 8 VIOL 8 KRUM 8 OBOE 8 QUINT 8 CONFL 8 CONFL 8 VOX 8 VOX

English Horn Trumpet Ophicleide Diaphone Bass Horn Clarinet Saxophone Piccolo (Tuba S) Piccolo (Tuba M) Strings (2 Pcs) Contrabass Viol Twelfth (Tuba S) Twelfth (Tuba M) Piccolo (Tuba S) Piccolo (Tuba M) Treble (Tuba S) Treble (Tuba M) Large (Tuba) Fife (Tuba)

16 HORN 16 TRUM 16 OPH 16 DIAPH 16 BASS 16 HORN 16 CLAR 16 SAX 16 PICC 16 PICC 16 STR 16 GAM 16 VIOL 16 VIOL 16 KRUM 16 OBOE 16 QUINT 16 CONFL 16 CONFL 16 VOX 16 VOX

6 7 8 9 10 PP P MF F FF 1 2 3 4 5 6 7 8 9 10

SET Grand Crap Drum Roll Cymbal Roll Cymbal Roll 2 Crash Cymbal Choke Cymbal Scripe Cymbal Chimes Cap Bell Tree Triangle Train Whistle Fife Bell Door Bell Anghorn Horn C Blower

Frame: 001 Transp: +00 Tune: +00 Temper: Equal Redir 1: Redir 2: Record Capture Active

Hauptwerk - Paramount332

File Organ Combinations Temperament Functions General settings Organ settings Design tools Help

Console All Buttons Ped/Acc Tabs Great/Solo Tabs Sforzando

ACCOMP

CHRYST VIB SIDE SNARE TAMB TAMB CAST TOM BLOCK HH-O HH-C TAP RIDE CELCEL MIDI On Accomp Octave Solo Percs Traps Glock Tri Great Solo

8 CHRYS 8 VIB 8 SIDE 8 SNARE 8 TAMB 8 TAMB 8 CAST 8 TOM 8 BLOCK 8 HH-O 8 HH-C 8 TAP 8 RIDE 8 CEL 8 CEL 8 MIDI 8 ON 8 ACCOMP 8 OCT 8 SOLO 8 PERCS 8 TRAPS 8 GLOCK 8 TRI 8 GREAT 8 SOLO

Viol Hummer 2 Viol Hummer 3 Octave Horn Octave Horn Piccolo (Tuba S) Piccolo (Tuba M) Strings (2 Pcs) Contrabass Viol Twelfth (Tuba S) Twelfth (Tuba M) Piccolo (Tuba S) Piccolo (Tuba M) Treble (Tuba S) Treble (Tuba M) Large (Tuba) Fife (Tuba)

8 VOX 8 VOX 8 OCT 4 HORN 4 HORN 8 PICC 8 PICC 8 STR 8 GAM 8 VIOL 8 VIOL 8 TWEL 8 TWEL 8 TWEL 8 TWEL 8 PICC 8 PICC 8 TREB 8 TREB 8 TREB 8 TREB 8 LAR 8 FIF 8 FIF

English Horn Trumpet Tuba Horn Diaphone Bass Horn Clarinet Saxophone Piccolo (Tuba S) Piccolo (Tuba M) Strings (2 Pcs) Contrabass Viol Twelfth (Tuba S) Twelfth (Tuba M) Piccolo (Tuba S) Piccolo (Tuba M) Treble (Tuba S) Treble (Tuba M) Large (Tuba) Fife (Tuba)

8 HORN 8 TRUM 8 TUBA 8 DIA 8 OPEN 8 OPEN 8 HORN 8 CLAR 8 SAX 8 OBOE 8 SAX 8 STR 8 GAM 8 VIOL 8 VIOL 8 KRUM 8 OBOE 8 QUINT 8 CONFL 8 CONFL 8 VOX 8 VOX

1 2 3 4 5 PP P MF F FF 1 2 3 4 5 6 7 8 9 10

PEDAL

Strings (2 Pcs) Gammas Viol of Orchestra Krumphorn Oboe Horn Quintet Concert Flute Viol Hummer 2 Viol Hummer 3 Octave Piccolo (Tuba S) Piccolo (Tuba M) Strings (2 Pcs) Contrabass Viol Twelfth (Tuba S) Twelfth (Tuba M) Piccolo (Tuba S) Piccolo (Tuba M) Treble (Tuba S) Treble (Tuba M) Large (Tuba) Fife (Tuba)

8 STR 8 GAM 8 VIOL 8 KRUM 8 OBOE 8 QUINT 8 FLUTE 8 VOX 8 VOX 8 OCT 4 PICC 4 PICC 8 STR 8 GAM 8 VIOL 8 VIOL 8 TWEL 8 TWEL 8 TWEL 8 TWEL 8 PICC 8 PICC 8 TREB 8 TREB 8 TREB 8 TREB 8 LAR 8 FIF 8 FIF

English Horn Trumpet Tuba Horn Diaphone Bass Horn Clarinet Saxophone Piccolo (Tuba S) Piccolo (Tuba M) Strings (2 Pcs) Contrabass Viol Twelfth (Tuba S) Twelfth (Tuba M) Piccolo (Tuba S) Piccolo (Tuba M) Treble (Tuba S) Treble (Tuba M) Large (Tuba) Fife (Tuba)

8 HORN 8 TRUM 8 TUBA 8 DIA 8 OPEN 8 OPEN 8 HORN 8 CLAR 8 SAX 8 OBOE 8 SAX 8 STR 8 GAM 8 VIOL 8 VIOL 8 KRUM 8 OBOE 8 QUINT 8 CONFL 8 CONFL 8 VOX 8 VOX

1 2 3 4 5

TREMLANTS

Alternative Flute On More Chimes On Main Solo Clarinet Tuba Dia Tuba Tuba Vox String M String S Sax Trum Re-It Re-It Vib

1 2 3 4 5

SET Grand Crap Drum Roll Cymbal Roll Cymbal Roll 2 Crash Cymbal Choke Cymbal Scripe Cymbal Chimes Cap Bell Tree Triangle Train Whistle Fife Bell Door Bell Anghorn Horn C Blower

Frame: 001 Transp: +00 Tune: +00 Temper: Equal Redir 1: Redir 2: Record Capture Active